

# Stoney Creek

Plan # LT04016



[www.locktitelogs.com](http://www.locktitelogs.com)

## Square Footage

First Floor: 788 Sq Ft.

Second Floor: 680 Sq Ft.

Porches: 343 Sq Ft.

Total Footage: 1811 Sq Ft.

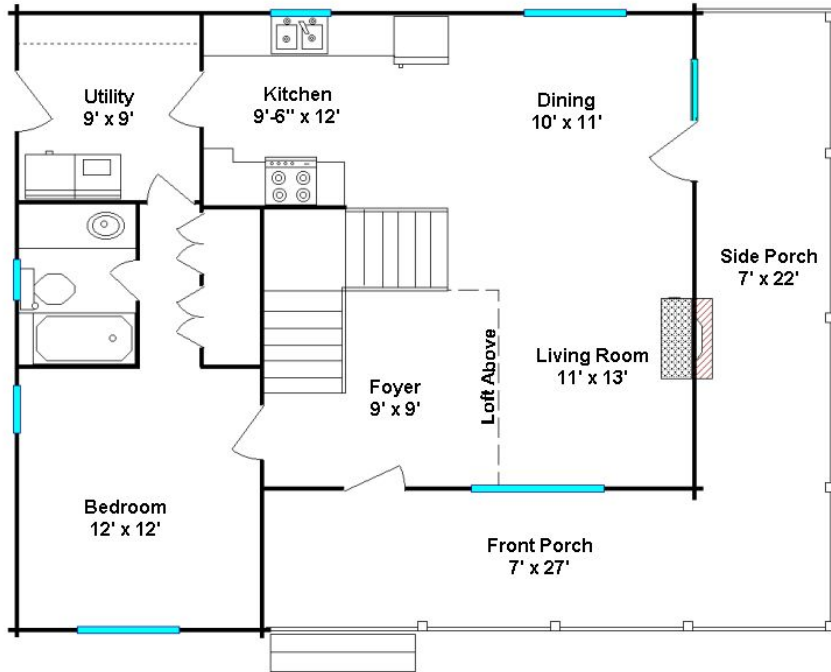
Total Living Space: 1468 Sq Ft.



All floor plan measurements are approximations and are subject to change. Up-to-date, and accurate layouts are supplied in the blueprints for all of our models.

# Stoney Creek

Plan # LT04016



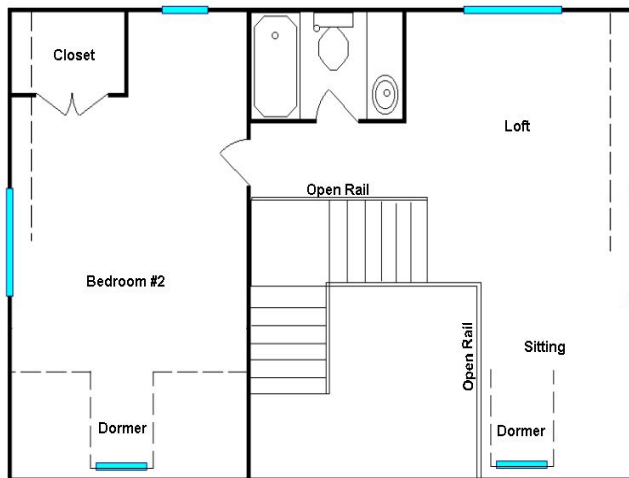
## Laminated Pine Log Kit

Laminated Logs (Precision Pre-Cutting Optional)  
PVC Foam Seal  
8" Log Fasteners  
Adhesive Log Caulk  
Laminated Beams & Joists (2<sup>nd</sup> Floor)  
Laminated Roof Structure Package  
Porch Roof System

### **\*Precision Pre-Cutting Includes:**

- Engineered Drawings
- Pre-Cutting Window & Door Bucks
- Splined Joinery System
- Pre-Cut Logs Cut & Identified For Placement
- Locator Bundle Sheets

*\*Portions of this kit may be pre-assembled at our facility to ensure accuracy.*



470 B. Leazer Road Salisbury, North Carolina 28147

Phone: (704) 638-0677

Fax: (704) 633-9217

Email: [Contact@locktitelogs.com](mailto:Contact@locktitelogs.com)