

The Bear Hollow

Plan# LT08002



www.locktitelogs.com



Square Footage

First Floor: 1232

Second Floor: 693

Covered Porches: 1408

Total Footage: 3333

Total Living Space: 1925



The Bear Hollow

Plan# LT08002

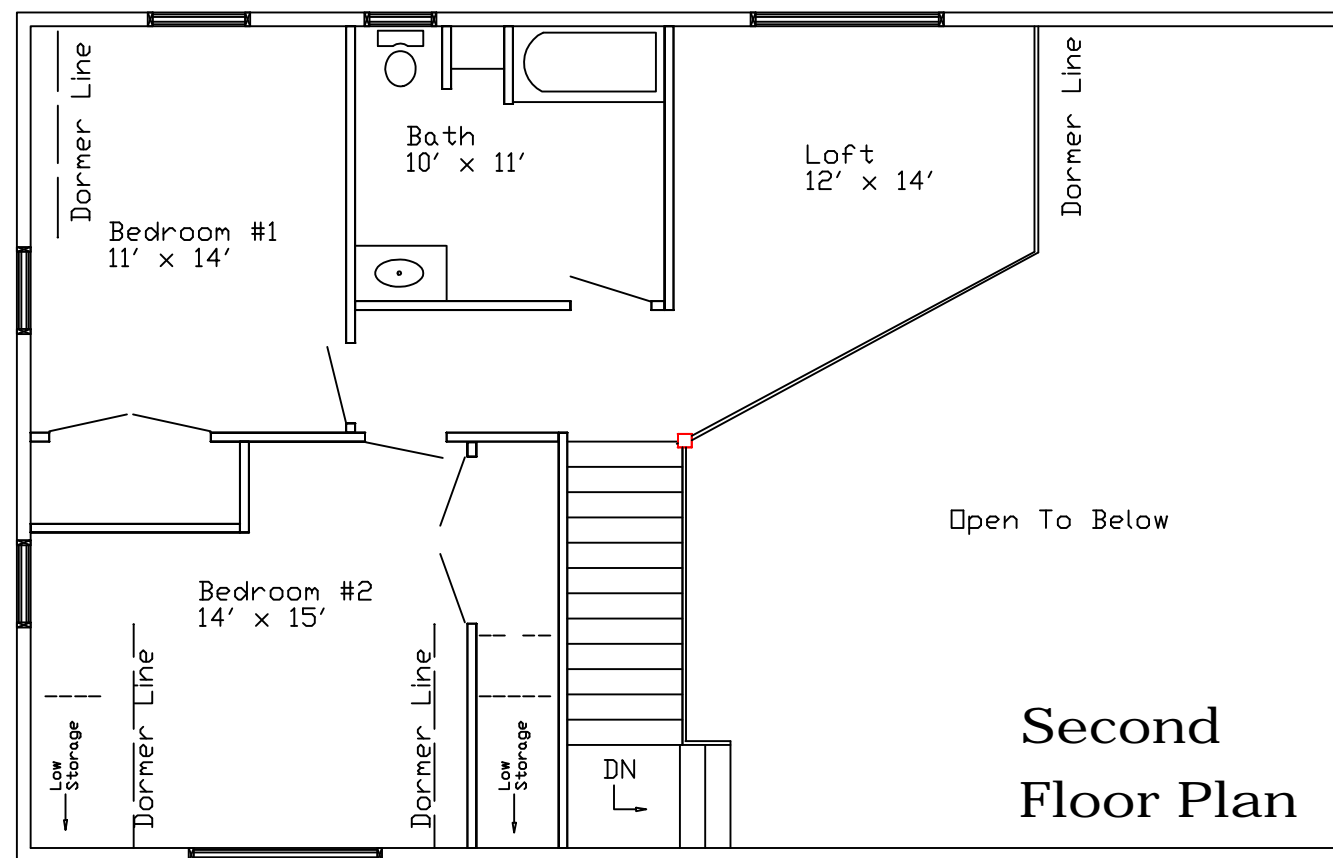
Engineered Log Package

Standard Package Includes:

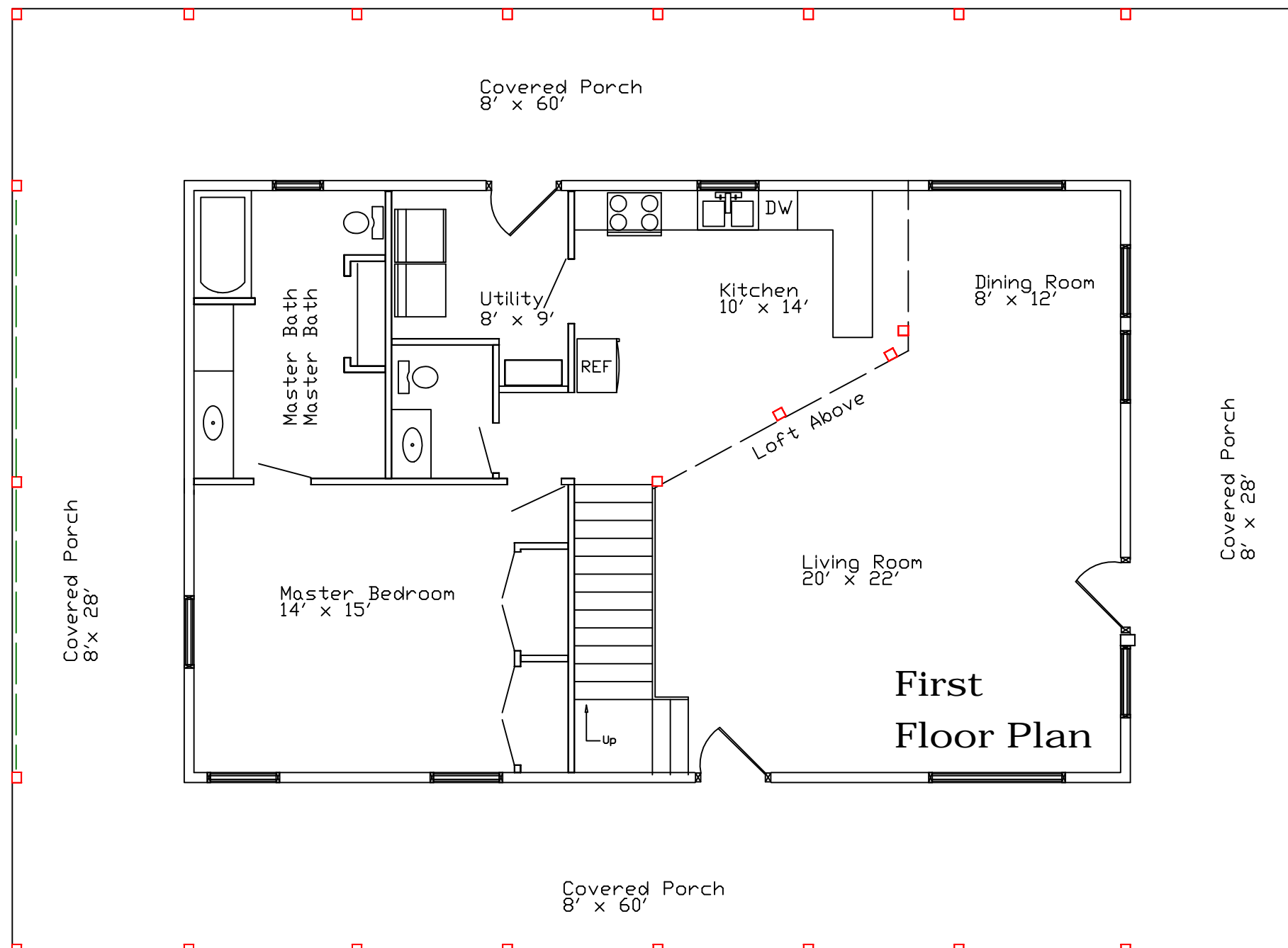
- Engineered Logs
- Precision Pre-Cutting
- PVC Foam Seal
- Log Fasteners
- Sika-Flex Adhesive Caulk
- Pre-Cut Starter Plates
- Pre-Cut Window & Door Jigs
- Porch Posts & Beams
- Matching Log Siding
- Heavy Timber Roof System (Optional)
- Windows & Doors (Optional)
- Start-Up On Site Assistance Program



470 B. Leazer Road
Salisbury, NC 28147
Phone: (704)638-0677
Fax: (704) 633-9217
Email: contact@locktitelogs.com



Second
Floor Plan



First
Floor Plan