

The Wildcat Trail

Plan# LT07003

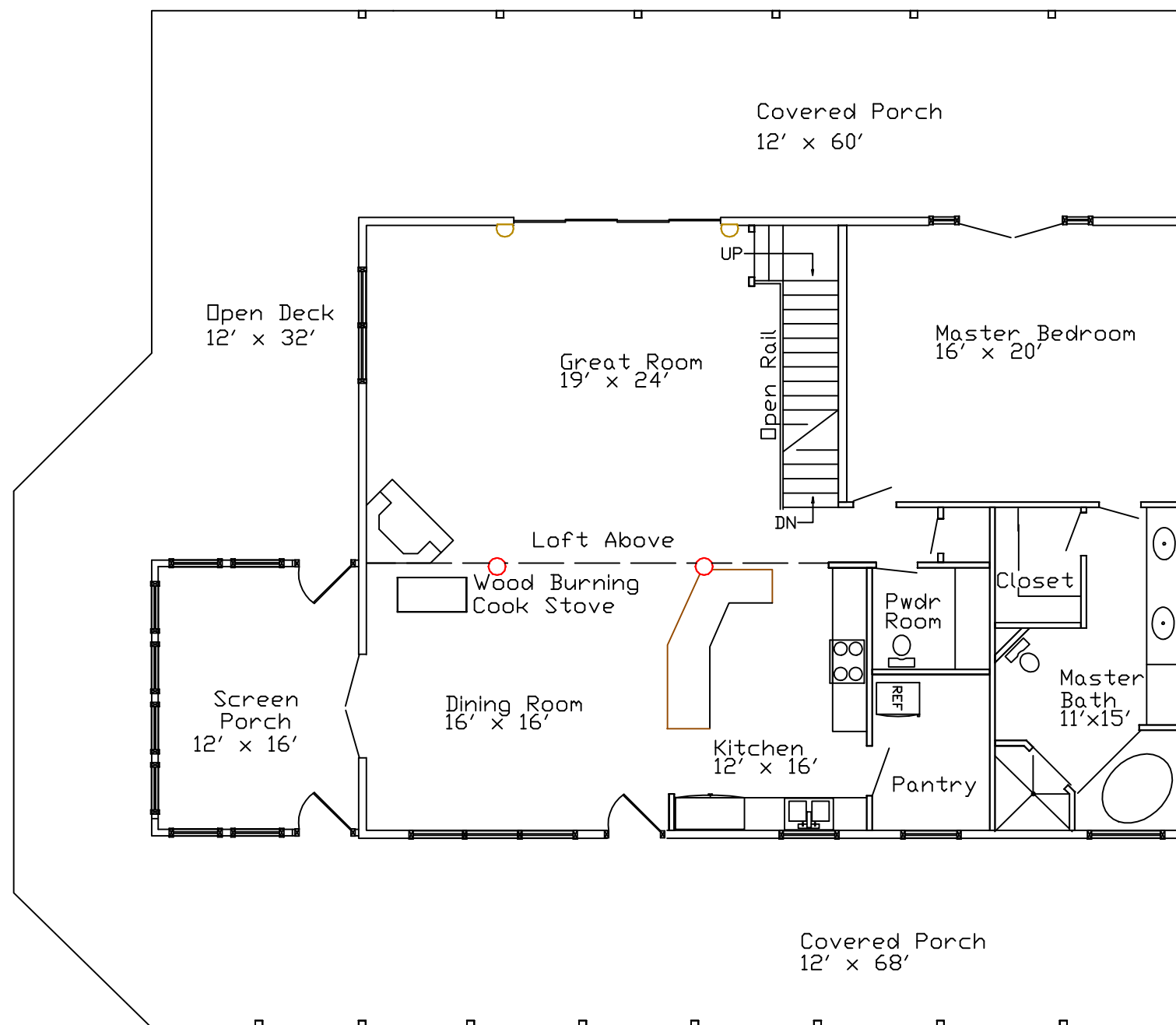
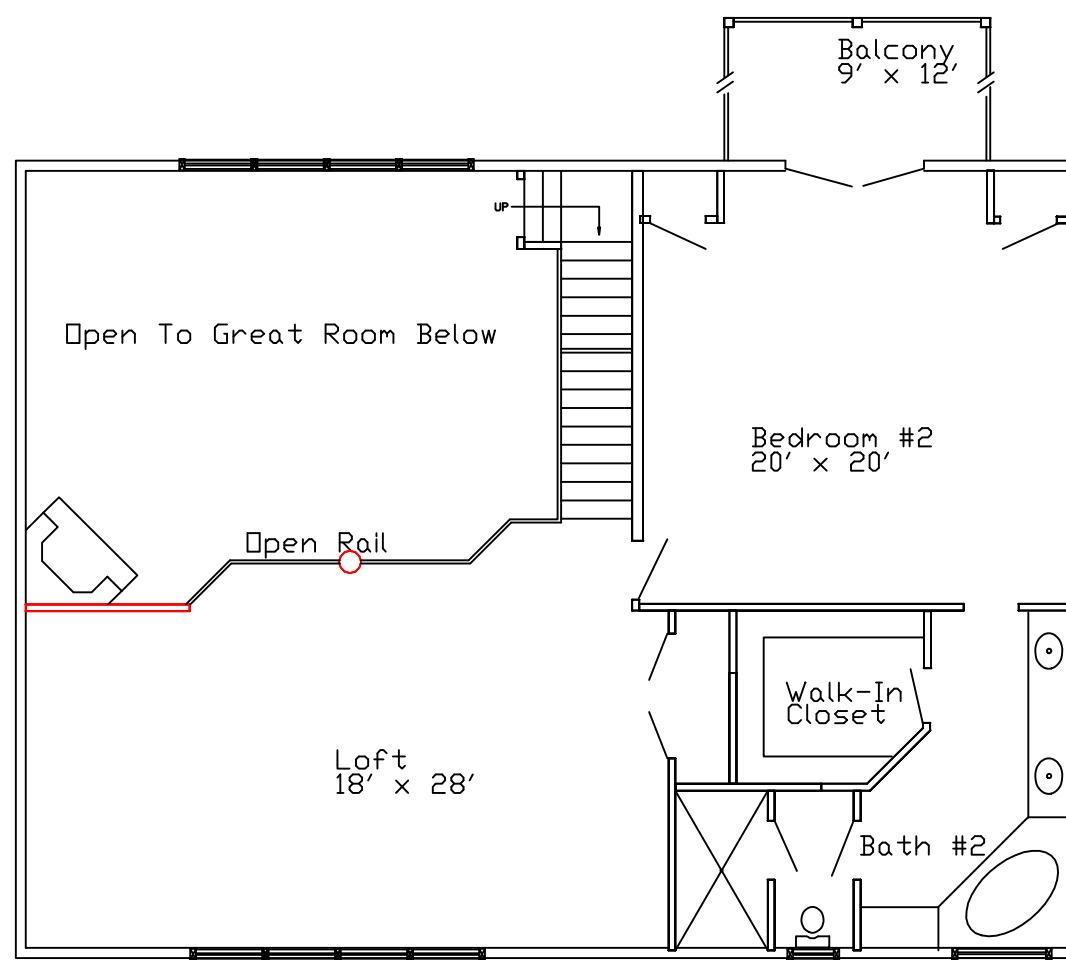
Engineered Log Package

Standard Package Includes:

- Engineered Logs
- Precision Pre-Cutting
- PVC Foam Seal
- Log Fasteners
- Sika-Flex Adhesive Caulk
- Pre-Cut Starter Plates
- Pre-Cut Window & Door Jigs
- Porch Posts & Beams
- Matching Log Siding
- Heavy Timber 2nd Floor System
- Heavy Timber Roof System (Optional)
- Windows & Doors (Optional)
- Start-Up On Site Assistance Program



470 B. Leazer Road
Salisbury, NC 28147
Phone: (704)638-0677
Fax: (704) 633-9217
Email: contact@locktitelogs.com

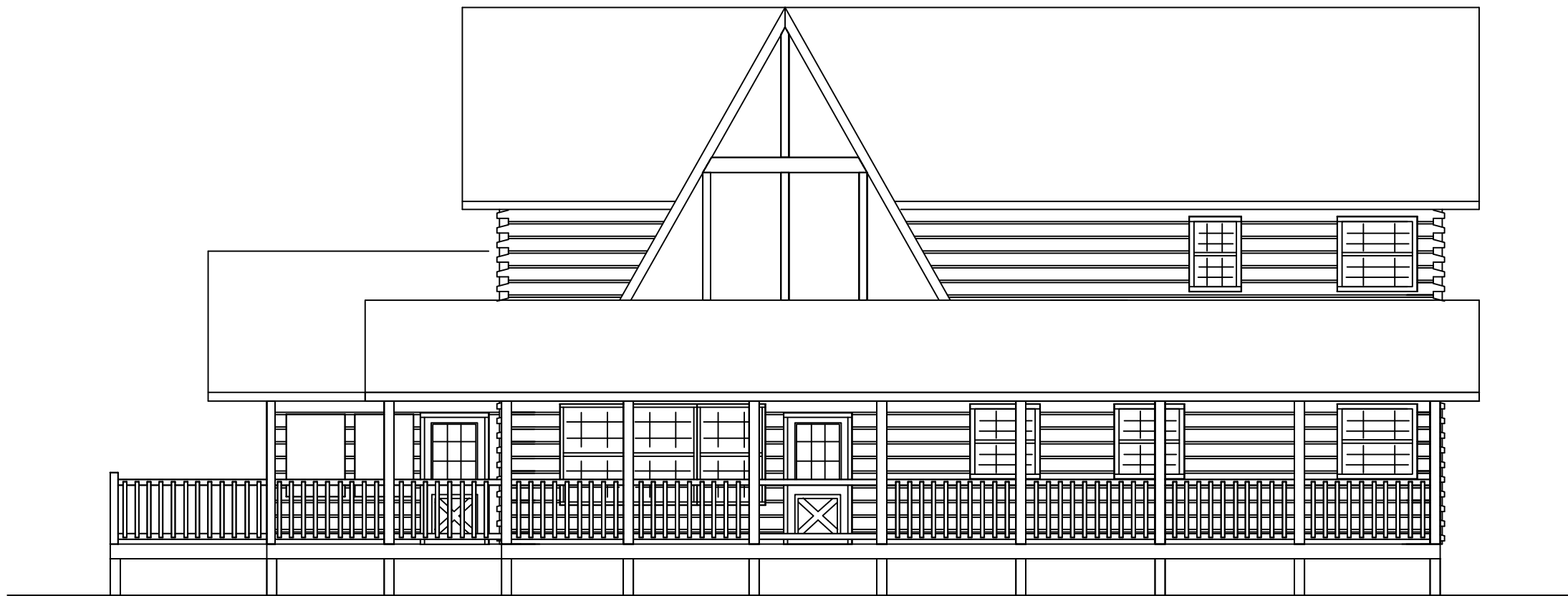


The Wildcat Trail

Plan# LT07003



www.locktitelogs.com



Square Footage

First Floor: 1705

Second Floor: 1223

Open Decks & Porches: 1856

Screen Porch: 195

Total Footage: 4979

Total Living Space: 2928