

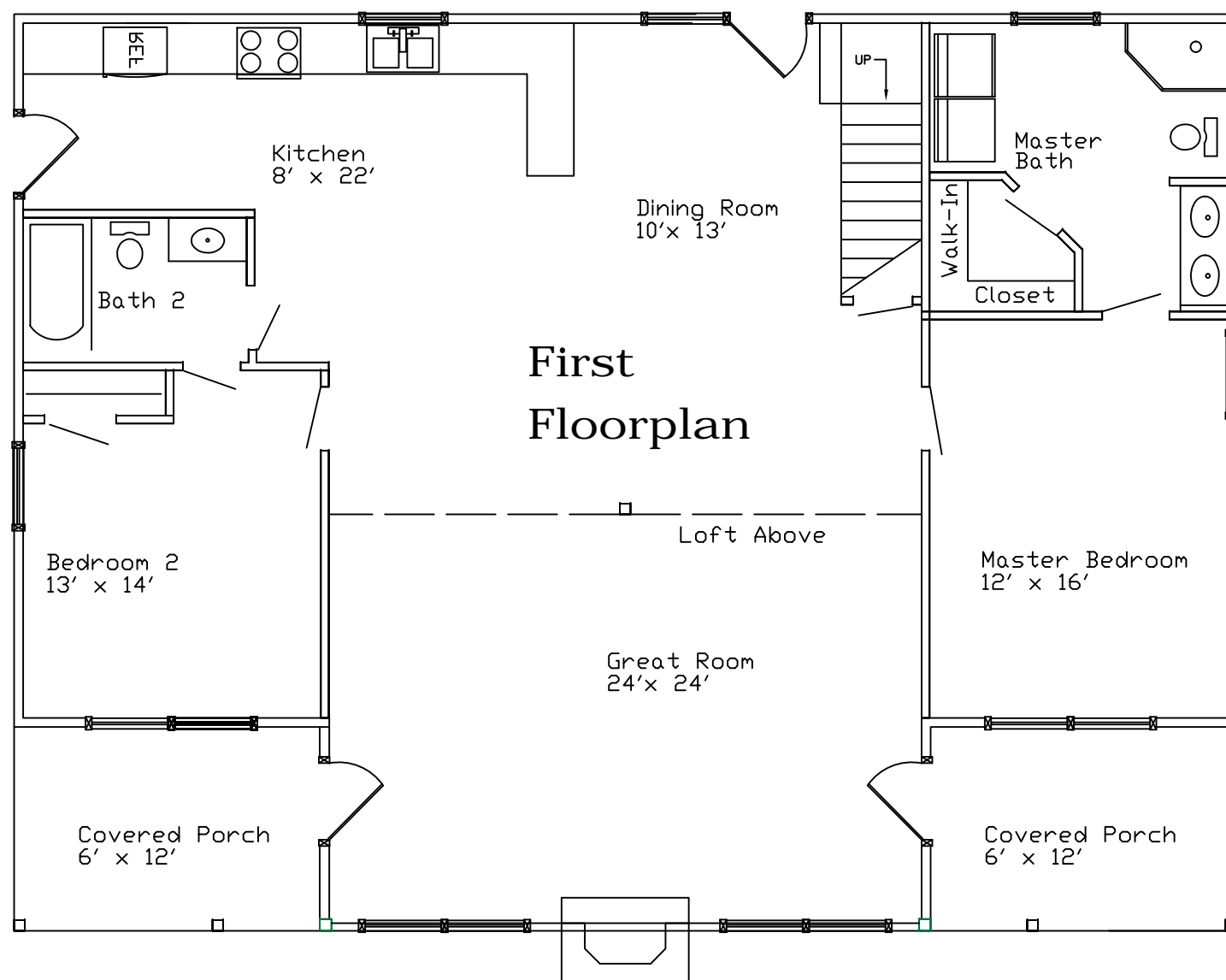
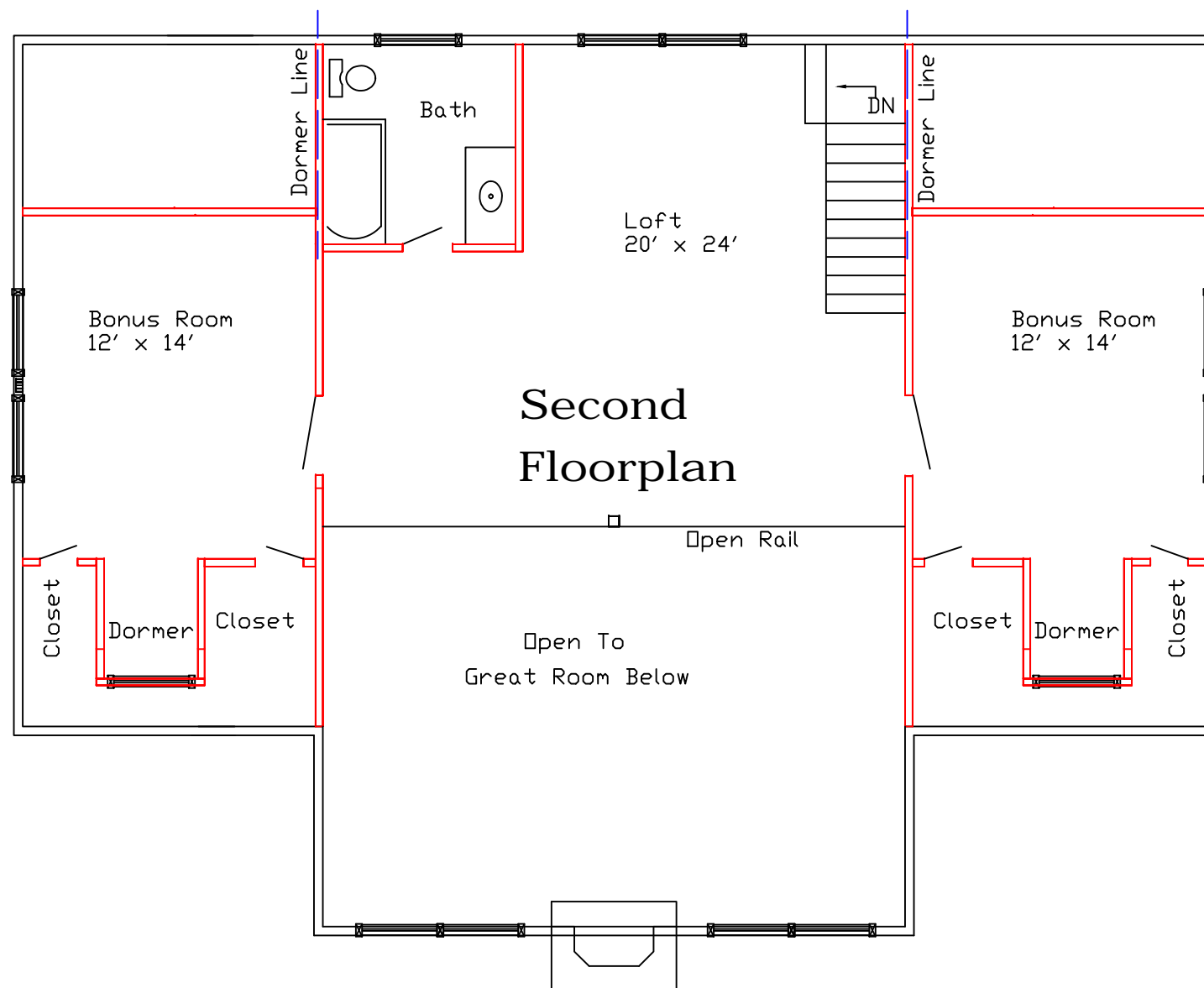
# The South Mountain

Plan# LT07002

## Engineered Log Package

### *Standard Package Includes:*

- Engineered Logs
- Precision Pre-Cutting
- PVC Foam Seal
- Log Fasteners
- Sika-Flex Adhesive Caulk
- Pre-Cut Starter Plates
- Pre-Cut Window & Door Jigs
- Porch Posts & Beams
- Matching Log Siding
- Heavy Timber Roof System (Optional)
- Windows & Doors (Optional)
- Start-Up On Site Assistance Program



470 B. Leazer Road  
Salisbury, NC 28147  
Phone: (704)638-0677  
Fax: (704) 633-9217  
Email: [contact@locktitelogs.com](mailto:contact@locktitelogs.com)

# The South Mountain

Plan# LT07002



[www.locktitelogs.com](http://www.locktitelogs.com)



## Square Footage

First Floor: 1537

Second Floor: 844

Covered Porches: 192

Total Footage: 2573

Total Living Space: 2381

