

The Georgian



Square Footage

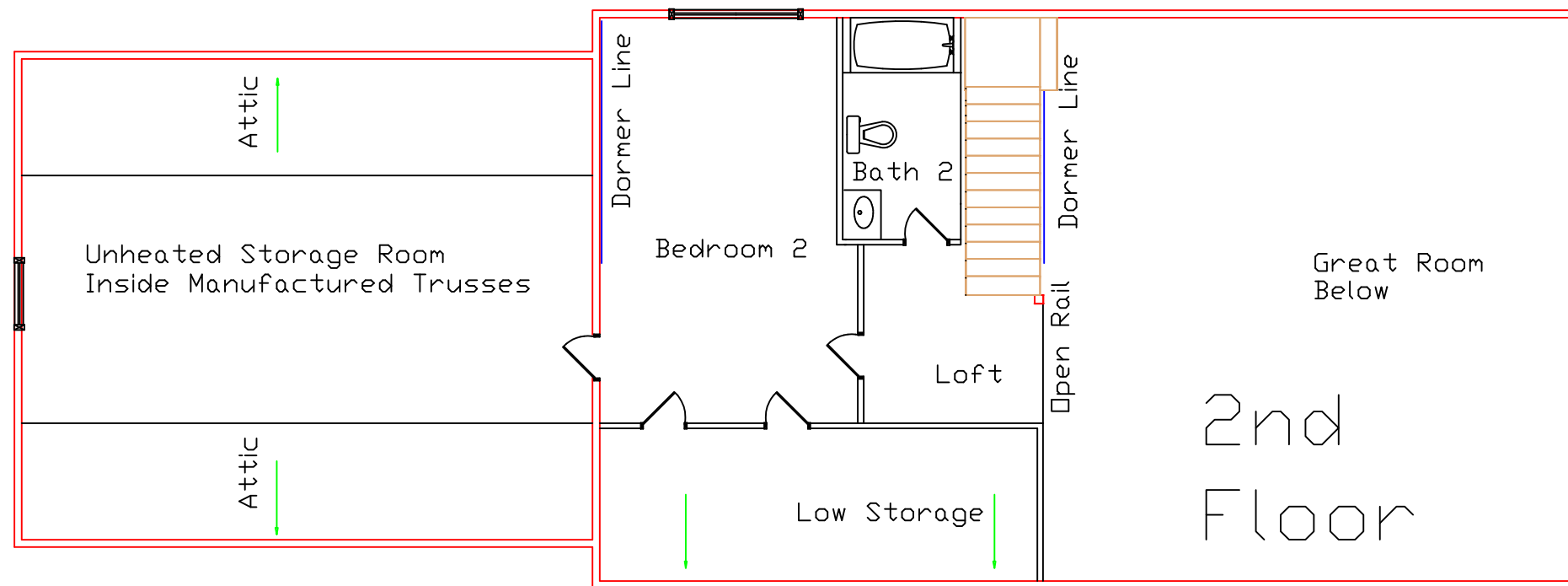
First Floor:	1344
Second Floor:	252
Unheated Bonus Room:	392
Decks & Porches:	912
Total Footage:	2900
Total Living Space:	1596



PLAN # LT05010

The Georgian

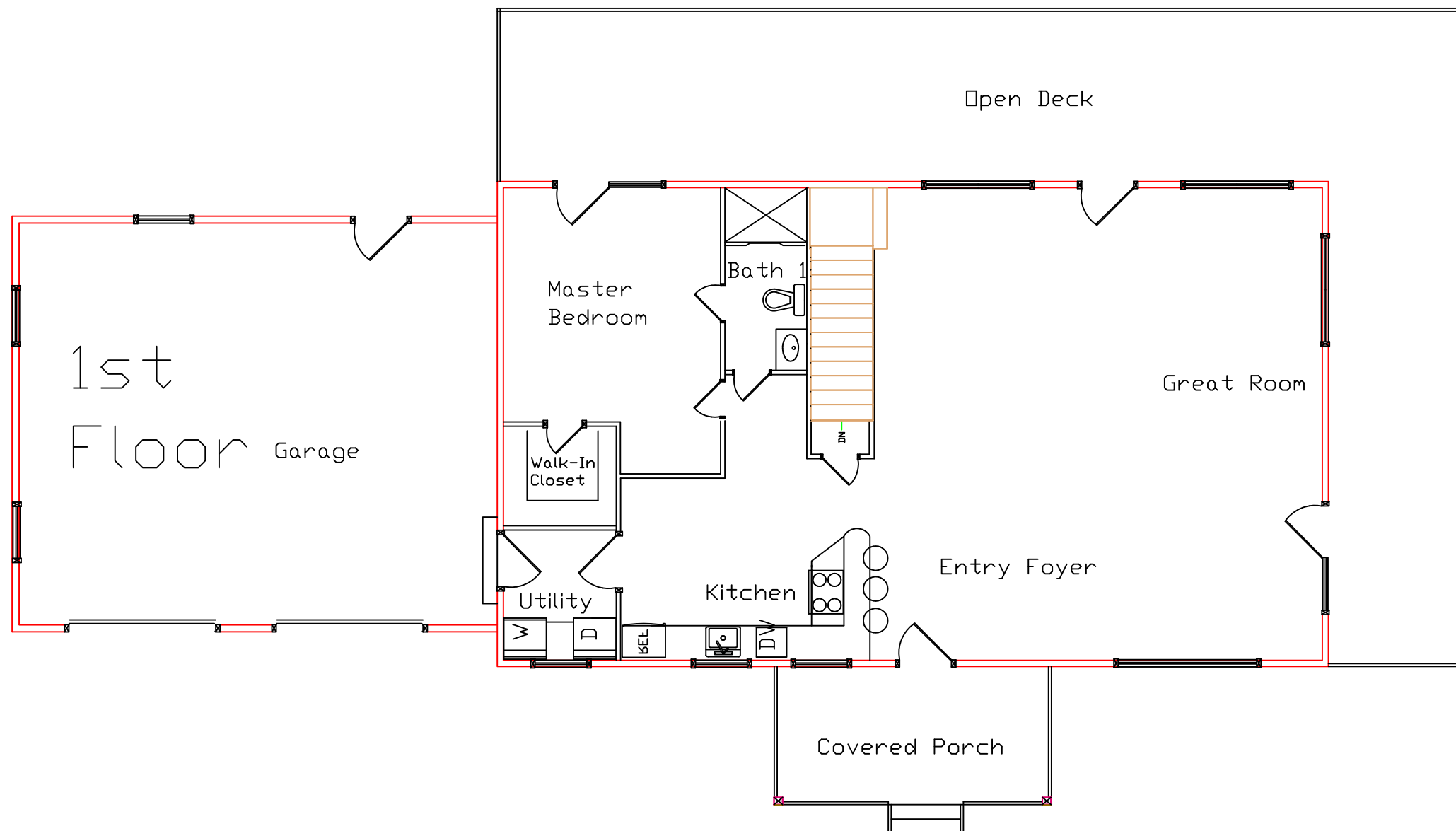
Plan# LT0510



Engineered Log Package

Standard Package Includes:

- Engineered Logs
- Precision Pre-Cutting
- PVC Foam Seal
- Log Fasteners
- Sika-Flex Adhesive Caulk
- Pre-Cut Starter Plates
- Pre-Cut Window & Door Jigs
- Porch Posts & Beams
- Matching Log Siding
- Heavy Beam 2nd Floor System
- Heavy Timber Roof System (Optional)
- Windows & Doors (Optional)
- Start-Up On Site Assistance Program



470 B. Leazer Road
Salisbury, NC 28147
(704) 638-0677
www.locktitelogs.com