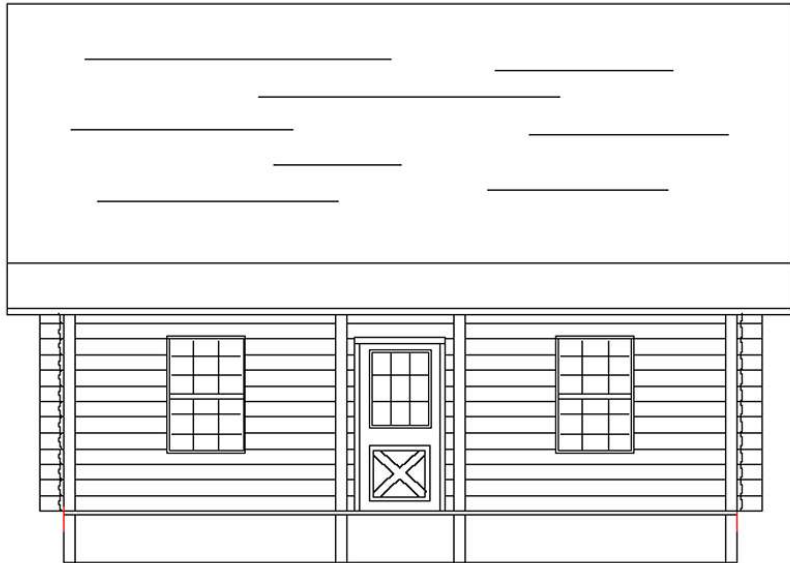


The Mountain Cabin



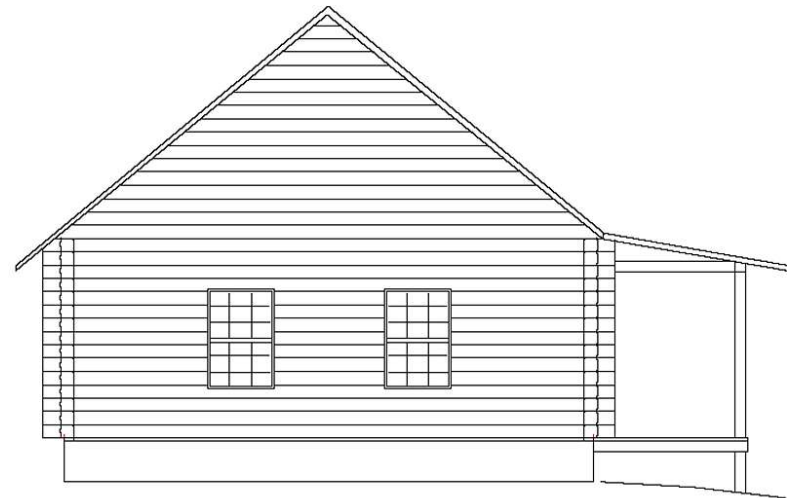
www.locktitelogs.com

Square Footage

First Floor: *624 Sq Ft.*

Second Floor: *529 Sq Ft.*

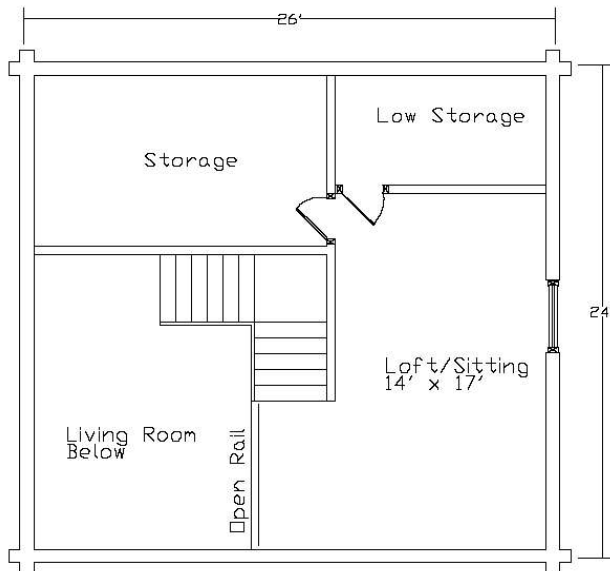
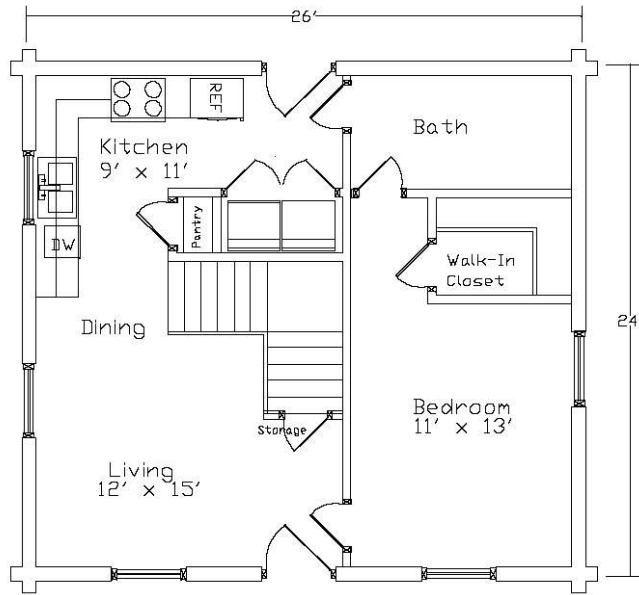
Total Living Space: *1253 Sq Ft.*



All floor plan measurements are approximations and are subject to change. Up-to-date, and accurate layouts are supplied in the blueprints for all of our models.

The Mountain Cabin

Plan # LT04030



Logs Only Package

Lock-Tite Laminated Logs
PVC Foam Seal
3/8" x 8" Lag Bolts
Sika-Flex 201 Adhesive Caulk

Structure Package

Laminated Joists & Beams (2nd Floor)
Laminated Roof Rafters & Ridge Beams
Laminated Porch Posts & Rafters

Dry-In Package

Sub-Floor Package	Porch Package
2 nd Floor Package (If required)	Deck Package
Full Roof Structure Package	Stairway Package
All Wood Window & Door Package	Framing Package
Exterior Trim Package	

Optional Services

Pre-Cut Corner Systems
Pre-Drilled For Bolts
Pre-Cut Starter Plates
Pre-Cut Window & Door Bucks
Start-Up On Site Assistance Program



470 B. Leazer Road Salisbury, North Carolina 28147

Phone: (704) 638-0722

Fax: (704) 633-9217

Email: Contact@locktitelogs.com

WWW: www.locktitelogs.com

